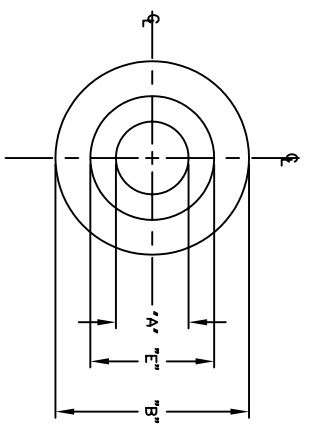
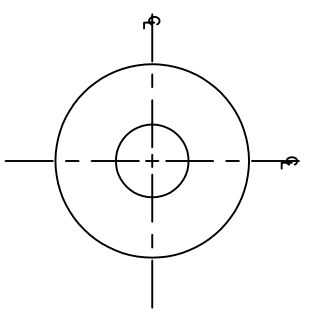
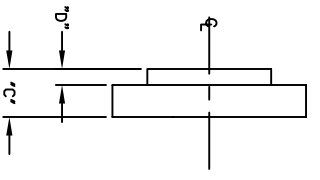
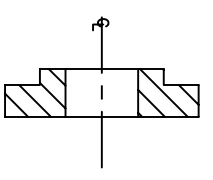


FULL SECTION



PART # FIBRE	PART # NYLON	DIM. "A"	DIM. "B"	DIM. "C"	DIM. "D"	DIM. "E"	SCREW CLR.
2171	2651	.093	.250	.055	.025	.154	#2
2151	2661	.115	.250	.062	.031	.187	#4
2152	2662	.141	.250	.093	.031	.187	#6
2153	2663	.141	.312	.093	.031	.187	#6
2150	2660	.141	.375	.093	.031	.240	#6
2155	2665	.167	.375	.093	.031	.246	#8
2156	2666*	.193	.361	.093	.031	.308	#10
2154	2664	.253	.500	.093	.031 MIN.	.309	#10
2159	2669	.265	.500	.097	.031	.365	#16
2157	2667	.378	.750	.093	.031	.498	3/8"
2158	2668	.385	.625	.093	.031	.498	3/8"

NOTES:

- 1) MATERIALS  
FIBRE: BLACK OR GREY, COMMERCIAL VULCANIZED FIBRE  
NYLON: NATURAL ZYTEL 101, RATED 94W2, PER ASTM-D4066
- 2) FIBRE WASHERS ARE NON-STANDARD, SPECIAL ORDER

MATERIAL	"SEE TABLE"	FINISH	"SEE TABLE"
DIMENSIONAL TOLERANCES	TITLE		
UNLESS OTHERWISE SPECIFIED	2150 SERIES, 2171, 2651, 2660 SERIES SHOULDER WASHER		
.XX	.XXX	.XXX	
---	---	---	
FRACTIONS	SCALE	DATE	DATE
---	5:1	4/21/93	5-20-93
HEAT TREAT	NONE	CHECKED	E. MCKINNEY
PLAT SCALE	1:1	APPROVED	J. TEASDALE
		DATE	5-25-93
		DRAWN	J. TEASDALE
		DATE	4/21/93
		CHECKED	E. MCKINNEY
		DATE	5-20-93
		APPROVED	J. TEASDALE
		DATE	5-25-93
		DRAWING NUMBER	SD: SMP-00267
		ISSUE	B

**ABBATRON**

Electronic Connectors and Hardware  
632 Arch Street, Meadville, Pa. 16335